

PRESS DOSSIER

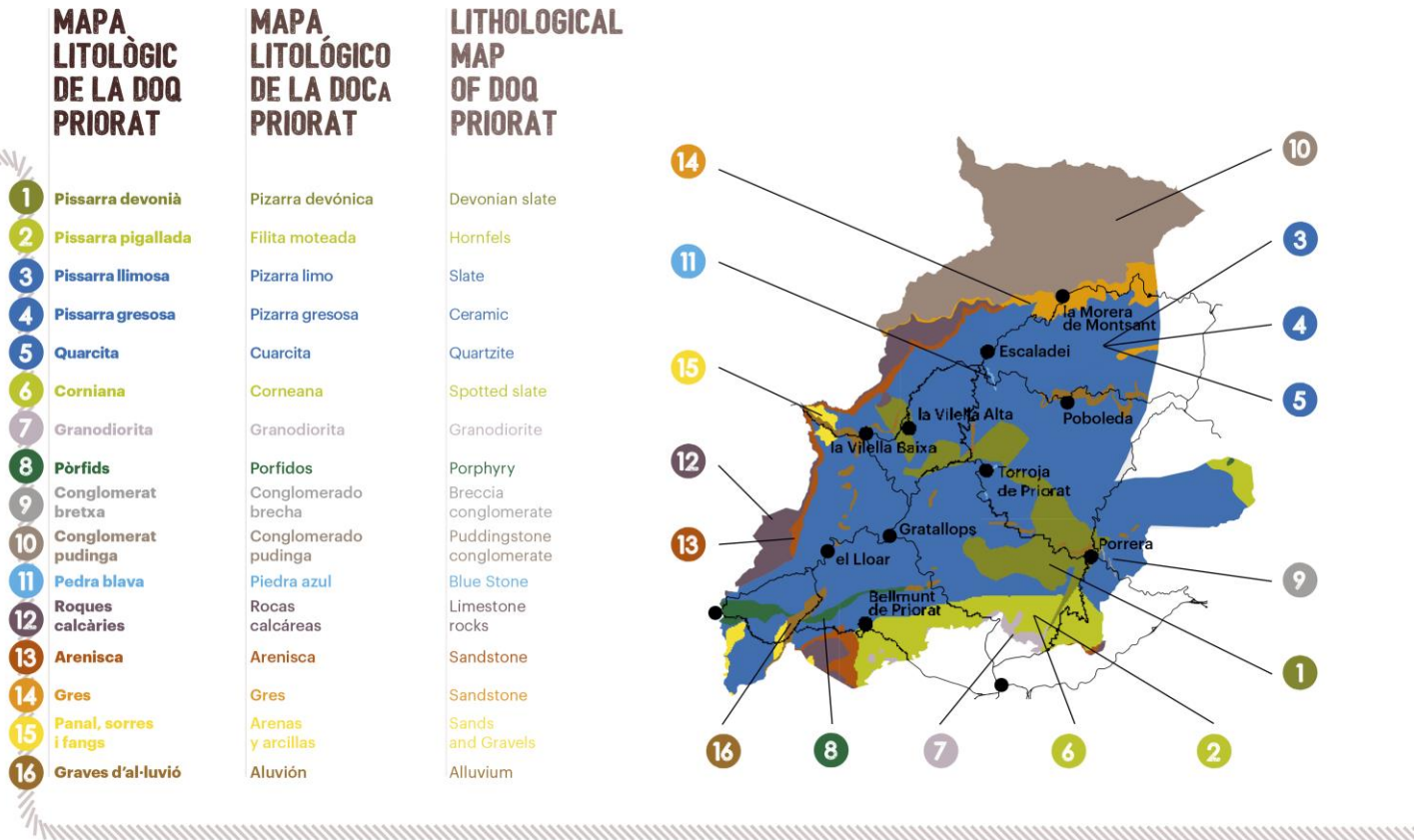


DOQ Priorat: a thousand years of winegrowing

Priorat has been cultivating vines for over a thousand years and the arrival of Carthusian monks, in the 12th century, allowed for new knowledge and techniques to develop winegrowing. This has been taking roots in the various villages that are part of the Cartoixa d'Escaladei domains, the current DOQ Priorat's origin.

Within DOQ Priorat territory, there are a number of geological and climate characteristics that define an exceptional ecosystem. *Llicorella* is one of the key elements of its soil's "terroir", way beyond Cartoixa d'Escaladei and where DOQ Priorat villages are located, which have vines as their main crops. However, pine trees and holm oaks, besides scrub where vines used to be, can also be found on what it is one of the most singular and characteristic landscapes in the Mediterranean area.

DOQ Priorat's villages are located right by the Montsant mountains and the soil around them is very rich, with *llicorella* as an essential component. Still, the lithological map of Priorat is way more extensive.



DOQ Priorat has 12 wine production areas: these produce the “Vines de Vila” (Village wines), which match uniform and specific units organised according to topographical, climatic, winegrowing, social, historical and economical variables. These territories go beyond administrative limits. Villages within DOQ Priorat are: Bellmunt, Gratallops, el Lloar, la Morera, Porrera, Poboleda, Escaladei, Torroja, la Vilella Alta, la Vilella Baixa and areas in Masos de Falset and les Solanes del Molar.



DOQ Priorat wines carry the singularity of a unique land, where soil is poor in terms of organic matter, which makes existing plants to amass a very high mineral concentration, which is then transmitted to every DOQ Priorat bottle of wine.

Depending the grape's origin, the existing just under a hundred wineries in DOQ Priorat can then proceed with the following labelling for their wines, according to their winegrowing project.



Wine of the DOQ Priorat region

It can be produced by all DOQ Priorat wineries using grapes grown in any of the plots within the Appellation of Origin.

DOQ Priorat Village Wine

- Wine must be entirely produced using grapes grown in vineyards located on a very same area delimited by Consell Regulador.
- Wine must be produced, aged and bottled by a natural or legal person that have ownership or account for the vineyard, or that have a leasing arrangement of 10 or more years.
- The maximum production performance of the vines must be 5.000 Kg/ha with red varieties and 7.000 Kg/h with white varieties.
- The composition of wine must have a minimum of 60% of Carignan and/or Grenache varieties.
- 90% of the vineyards must be 10 years old or more. Minimum age of 10% remaining for this type of wines is 5 years.
- Wine must follow an elaboration and aging process that is totally recognisable and independent inside a winery.

DOQ Priorat village wines

Wine	Village	Type	Blending	Winery
Álvaro Palacios	Gratallops	Red		Álvaro Palacios
La Guinardera	Gratallops	Red		Balaguer i Cabré
Black Slate	La Vilella Alta	Red		Bodegas Mas Alta
La Solana Alta	La Vilella Alta	White		Bodegas Mas Alta
Solertia	Gratallops	Red	Red Grenache Cabernet sauvignon Syrah	Buil & Giné
Triaca	Porrera	Red	Red Grenache Merlot	Buil & Giné
5 partides	Gratallops	Red		Cal Batllet – Celler Ripoll Sans
D'latra	Gratallops	Red	Carignan Red Grenache Cabernet sauvignon Syrah	Cal Batllet – Celler Ripoll Sans

DOQ Priorat village wines

Wine	Village	Type	Blending	Winery
Escanya-vella	Gratallops	White		Cal Batllet – Celler Ripoll Sans
Llum d'Alena	Gratallops	Red	Red Grenache Cabernet sauvignon Carignan	Cal Batllet – Celler Ripoll Sans
Ronçavall	Torroja del Priorat	Red	Carignan	Cal Batllet – Celler Ripoll Sans
Les Clivelles de Torroja	Torroja del Priorat	Red	Carignan	Celler Aixalà Alcait
Porrera Vi de Vila	Porrera	Red	Red Grenache Cabernet sauvignon Syrah	Celler Álvarez Duran Priorat
Black Slate	Porrera	Red	Red Grenache Merlot	Celler Cal Pla
La Carenyeta del Cal Pla	Porrera	Red	Carignan	Celler Cal Pla

DOQ Priorat village wines

Wine	Village	Type	Blending	Winery
Clos Petitona	Masos de Falset	Red	Red Grenache Hairy Grenache	Celler Cecilio
Desnivell	Masos de Falset	Red	Red Grenache Carignan	Celler Cecilio
Roquers de Garnatxa	Porrera	Red	Garnacha	Celler de l'Encastell
Roquers de Samsó	Porrera	Red		Celler de l'Encastell
Vall-Llach	Porrera	Red		Celler Vall Llach
Vall-Llach Vi de Finca qualificada Mas de la Rosa		Red		Celler Vall Llach
Masdeu de Scala Dei	Escaladei	Red	Red Grenache	Cellers de Scala Dei

DOQ Priorat village wines

Wine	Village	Type	Blending	Winery
Massipa de Scala Dei	Escaladei	White	White Grenache Chenin	Cellers de Scala Dei
Sant Antoni	Escaladei	Red		Cellers de Scala Dei
Cims de Porrera	Porrera	Red	Grenache	Cims de Porrera
Cims de Porrera	Porrera	White	Grenache	Cims de Porrera
Trosset de Porrera	Porrera	Red		Cims de Porrera
Clos de l'Ona	Gratallops	Red	Red Grenache	Clos Mogador
Clos Mogador – Vi de Finca qualificada		Red		Clos Mogador
Manyetes	Gratallops	Red		Clos Mogador
Partida Bellvisos	Gratallops	Red		Clos Mogador
Partida Bellvisos	Gratallops	White		Clos Mogador

DOQ Priorat village wines

Wine	Village	Type	Blending	Winery
Alice	Gratallops	Red		Devinssi
Mas de les Valls	Gratallops	White		Devinssi
Peites	Gratallops	Red	Red Grenache Syrah	Devinssi
Rocapoll	Gratallops	Red		Devinssi
Sant Jeroni Aubada	Gratallops	White	Pedro Ximénez White Grenache	Devinssi
Sant Jeroni Forn	Gratallops	Red	Carignan Cabernet sauvignon	Devinssi
Sant Jeroni Hort	Gratallops	Red	Red Grenache Syrah	Devinssi
Poboleda Vi de Vila	Poboleda	Red	Grenache Carignan Merlot	Genium Celler
Black Slate	Escaladei	Red		La Conreria d'Scala Dei

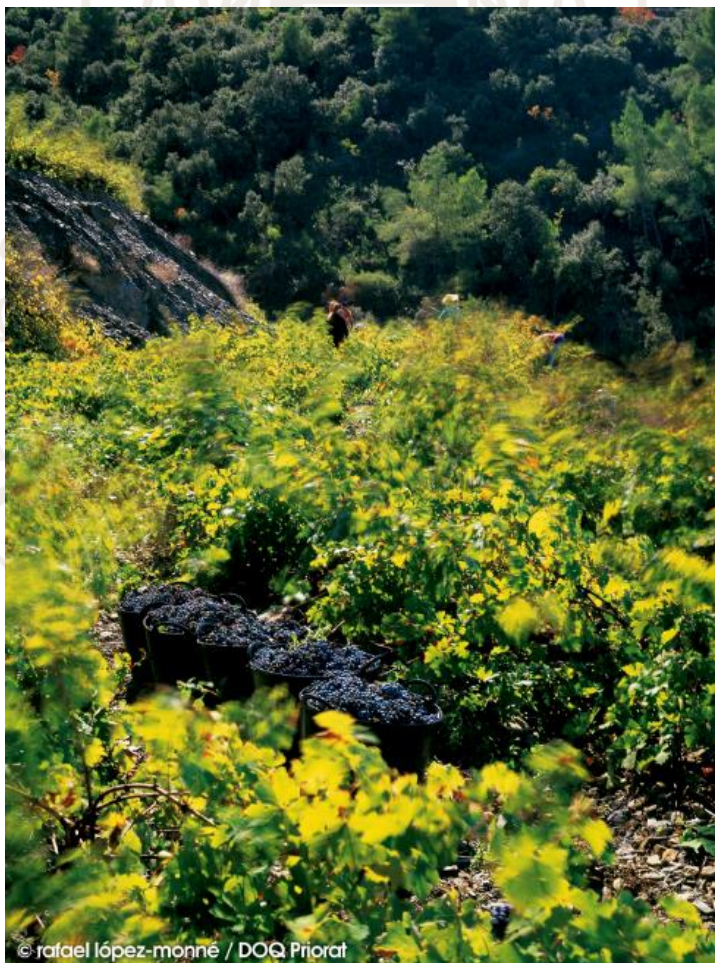
DOQ Priorat village wines

Wine	Village	Type	Blending	Winery
Black Slate	La Morera de Montsant	White		La Conreria d'Scala Dei
FA104	Gratallops	White		Mas Igneus
Buxus de les Aubagues	Bellmunt del Priorat	Red	Carignan Red Grenache	Meritxell Pallejà
Sabaté i Mur	Torroja del Priorat	Red		Sabaté i Mur Vinaters
Terroir al límit	Torroja del Priorat	Red		Terroir al límit
Roureda Llicorella	Poboleda	White	Pedro Ximénez	Unió Fruits, SCCL
Roureda Llicorella	Poboleda	Red	Red Grenache Carignan	Unió Fruits, SCCL
Vinícola del Priorat	El Lloar	Red	Carignan	Vinícola del Priorat
Vinícola del Priorat	La Vilella Alta	Red	Red Grenache Carignan	Vinícola del Priorat
Vinícola del Priorat	La Vilella Baixa	Red	Carignan	Vinícola del Priorat

DOQ Priorat village wines

Wine	Village	Type	Blending	Winery
Bellmunt Vi de Vila	Bellmunt del Priorat	White		Viticultors Mas d'en Gil
Bellmunt Vi de Vila	Bellmunt del Priorat	Red	Grenache	Viticultors Mas d'en Gil
Clos Fontà		Red	Red Grenache Carignan Hairy Grenache	Viticultors Mas d'en Gil
Coma Blanca		White	White Grenache Macabeu	Viticultors Mas d'en Gil

Wineries and producers in DOQ Priorat



The number of wineries –31 December 2018– that produce wines in DOQ Priorat is 109. Most of them offer guided tours and tastings inside their facilities on what becomes a complementary activity in Priorat that is growing more and more.

On 31 December 2018, DOQ Priorat has 535 winemakers that grow a total of 2.010ha of vines.

© rafael lópez-monné / DOQ Priorat

DOQ Priorat Grape varieties

VARIETIES	KG	%	Ha	Performance KG/Ha
Red Grenache	2.673.374	41,13%	743,8183	3.594,12
Carignan	1.532.966	23,59%	539,6519	2.840,66
Cabernet sauvignon	643.720	9,90%	225,8885	2.849,72
Syrah	654.200	10,07%	222,4255	2.941,21
Merlot	420.165	6,46%	100,6751	4.173,48
Hairy Grenache	39.806	0,61%	21,0363	1.892,25
Cabernet franc	28.944	0,45%	10,0342	2.884,53
Tempranillo	23.034	0,35%	7,5973	3.031,87
Pinot noir	577	0,01%	0,3375	1.709,63
Piquepoul	1.297	0,02%	0,5405	2.399,63
TOTAL RED	6.018.083	92,59%	1.872,01	3.214,78

DOQ Priorat Grape varieties

VARIETIES	KG	%	Ha	Performance KG/Ha
White Grenache	330.122	5,08%	83,0431	3.975,31
Macabeu	63.608	0,98%	25,2291	2.521,22
Pedro Ximénez	29.550	0,45%	11,0816	2.666,58
Viognier	26.879	0,41%	10,4755	2.565,89
Pansal	14.588	0,22%	2,6945	5.413,99
Muscat Blanc à Petits Grains	3.071	0,05%	1,2946	2.372,16
Piquepoul	7.755	0,12%	2,0397	3.802,03
Muscat of Alexandria	2.512	0,04%	1,0229	2.455,76
Chenin	3.535	0,05%	1,2116	2.917,63
TOTAL WHITE	481.620	7,41%	138,0925	3.487,66
TOTAL	6.499.703	100%	2.010,10	3.233,53

